

# Pier 1 Imports backdrop building kit in HO scale

Parking lot base and cars not included

This kit includes all building parts and signs milled in white and black styrene plastic, clear window glazing, logos and decals. All parts fit together but may need light sanding in joints for cosmetic reasons. The model needs painting.

Some model building and painting skills are required.



Manufactured by Custom Cuts by 

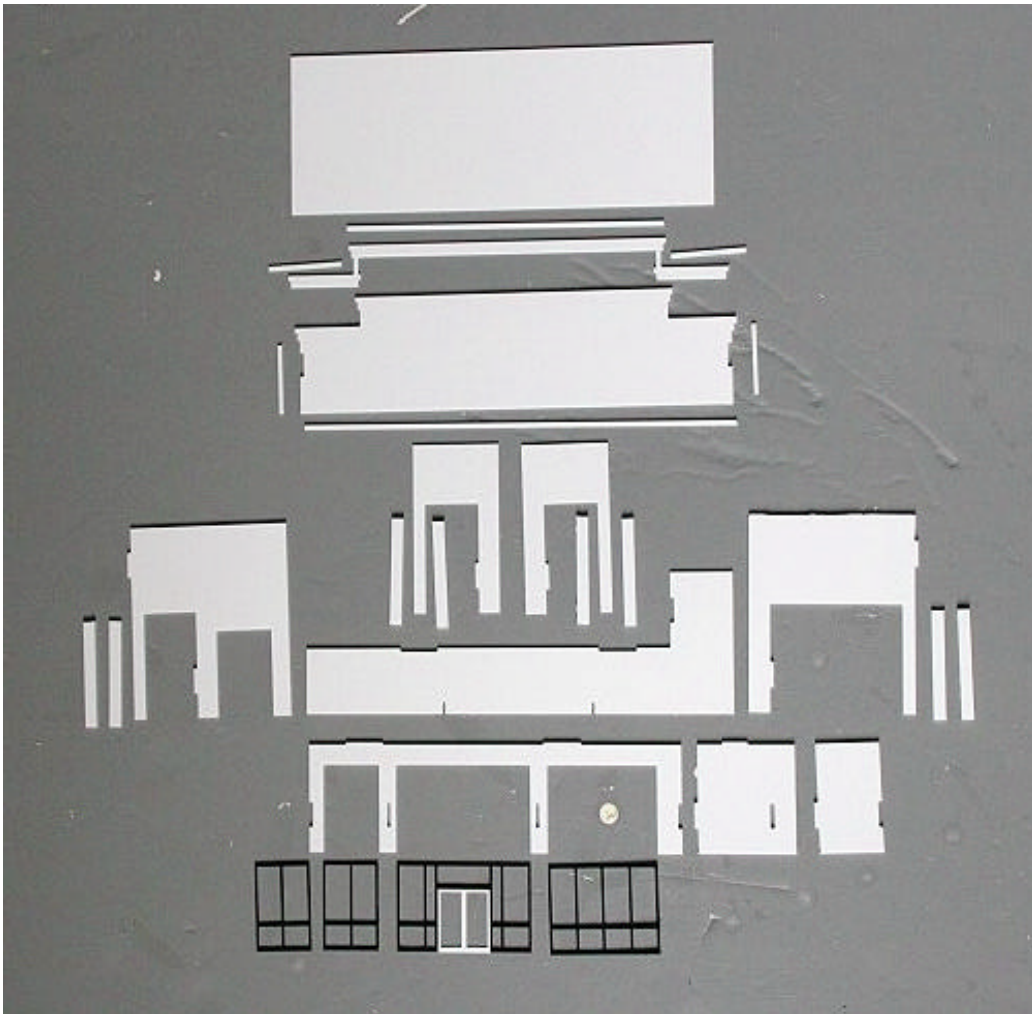
Summit USA LLC, 512 Ford Street, Lake Charles, LA 70601  
[www.summit-customcuts.com](http://www.summit-customcuts.com)

## Assembly instructions for Pier 1 Imports backdrop building

Thank you for buying this Pier 1 Imports mall extension backdrop building. Please take some time to read these instructions before you begin assembling.

This kit is milled in styrene plastic and is very easy to glue together using Plastruct Plastic Weld or similar glue products. The wall parts are tabbed and slotted for easier assembly. Take your time to identify all parts, lay them out and clean them for any burrs before gluing them together.

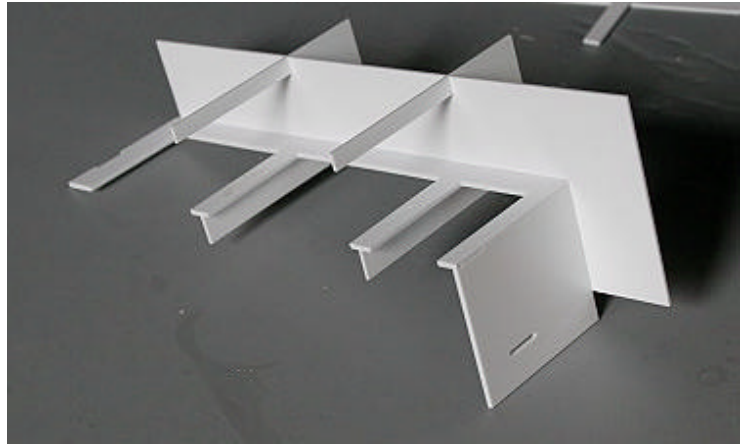
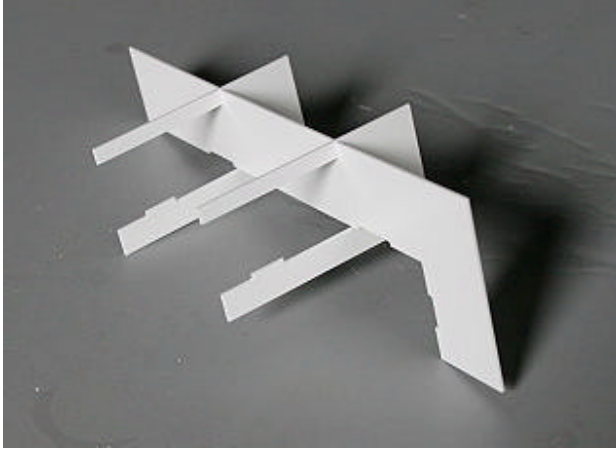
Break or cut the "fillings" out of the windows and doors and discard. Take the doors out of the frame. Clean the doors and window frames of any burrs using a hobby knife or a small file.



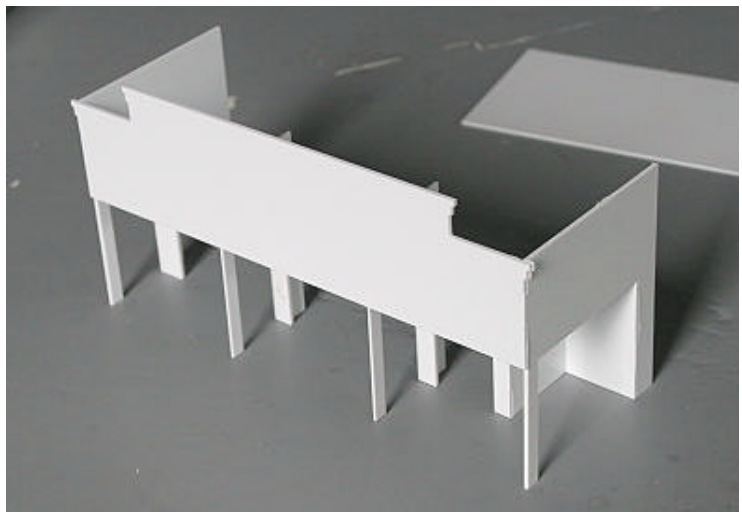
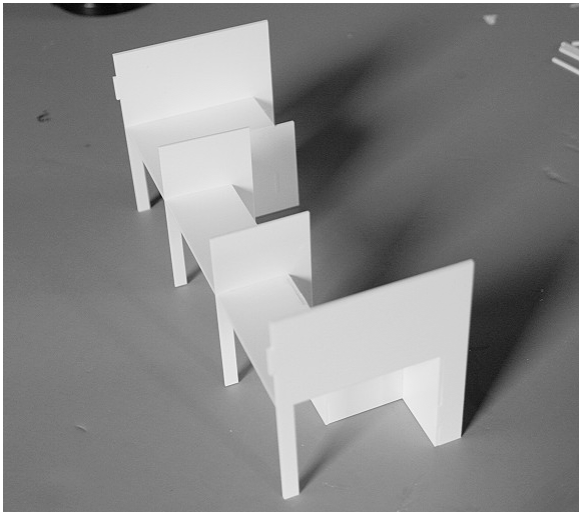
Parts overview

This building is meant to be the end building of the strip mall complex and can be at the "left" end or the "right" end depending on how you orient the front and end walls as well as the L-shaped overhang ceiling piece.

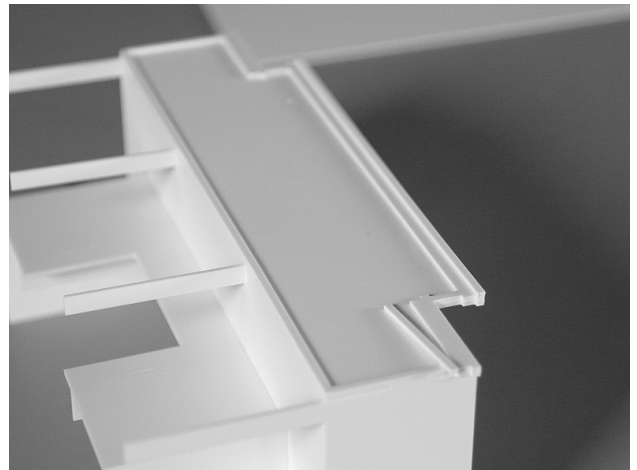
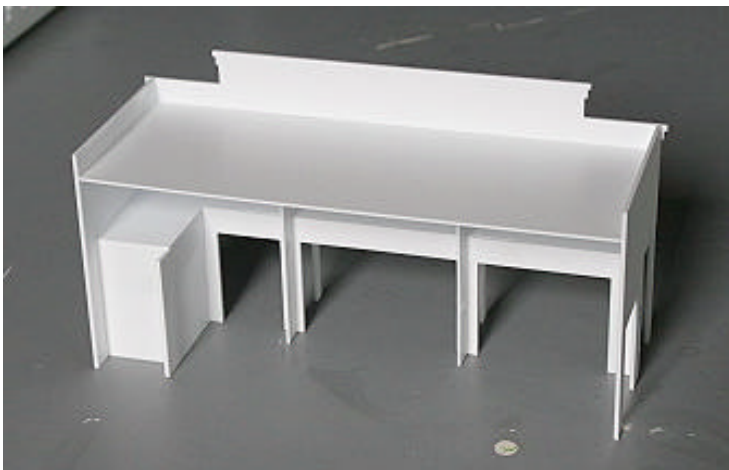
These instructions describes making the "left "end building.



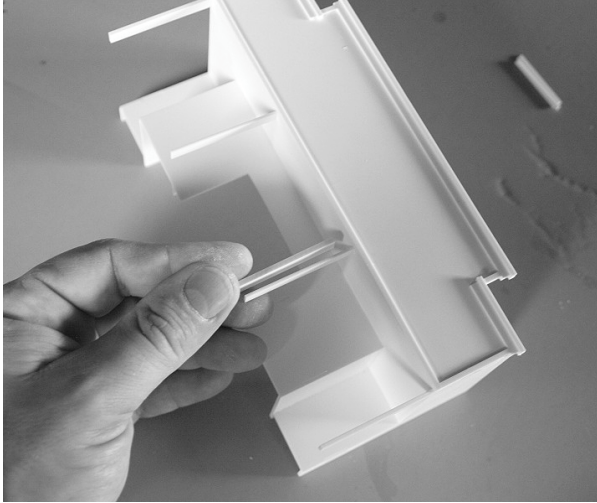
Attach the column frames to the arcade ceiling, then mount the storefront wall and the lower end walls, fitting the tabs and slots.



Then mount the small wall pieces perpendicular to the lower end walls and the high endwalls and the front facade.



Mount the roof. Glue on the trim pieces around the edges. On top of the upper trim piece, glue on the trim strips as shown below, aligning with the top edges.

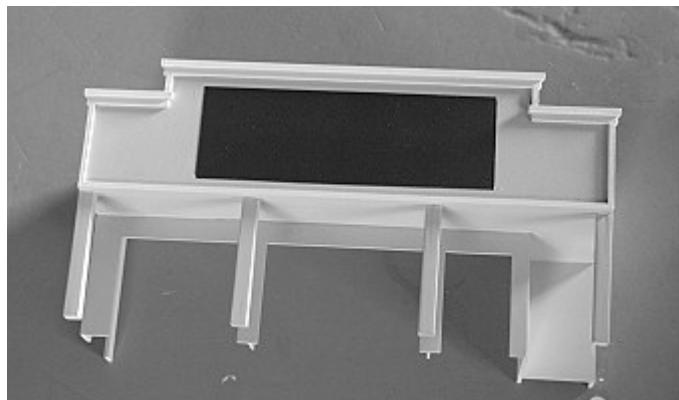
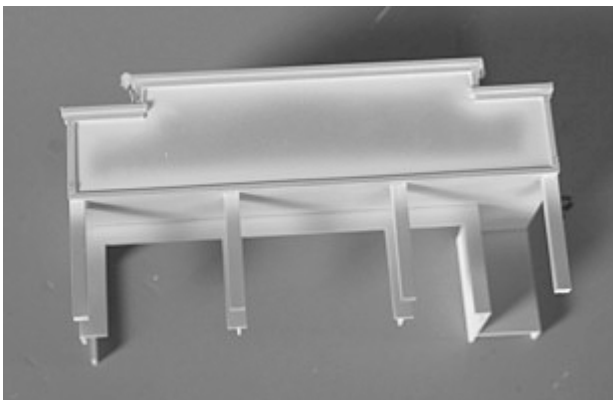


On the 2 middle columns, glue the 0.08" strips on both sides of the column, making it square. On the 2 outer columns, glue one 0.06" and one 0.08" strip on the inside of the column.

For best result, sand the columns to hide the joints.

## Painting

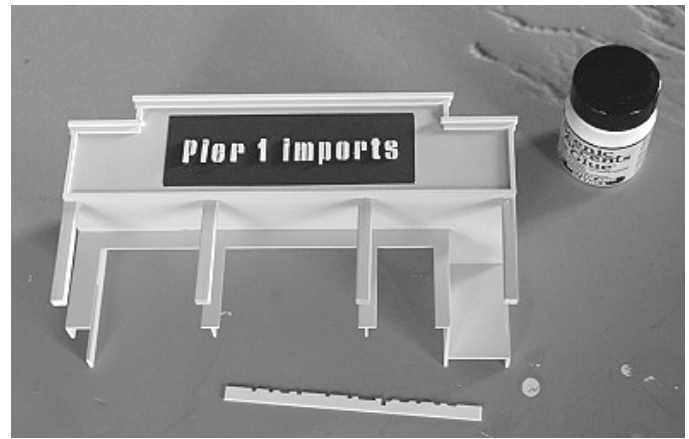
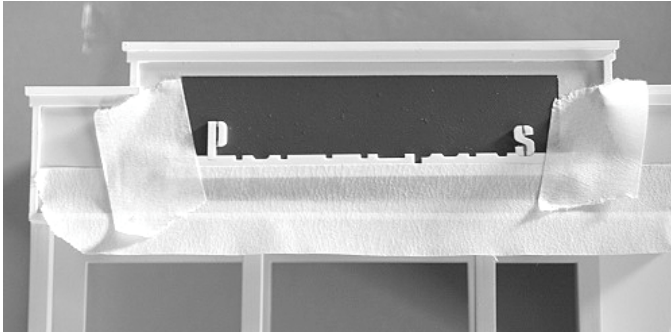
You can paint this strip mall any colors you like. For this demonstration model I used Floquil Antique White as the base color and Reefer White as the accent trim color. Start painting the white trim on top of the front wall. Let dry until next day before masking, then paint the wall color. Mask off a rectangle as shown below and paint it dark blue. Paint the doors black.



Paint the building before mounting the logo. Attach the logo letters to a piece of cardboard with double sided tape and paint it gray in the grooves. Carefully sand excess paint off the letters or paint them white.

Position the logo template so the logo is centered on the blue field and attach it with masking tape. See pictures on the next page.

Glue the letters on with a small amount of white glue or Woodland Scenics Scenic Accent Glue. Let the glue set before removing the template.



### Final assembly

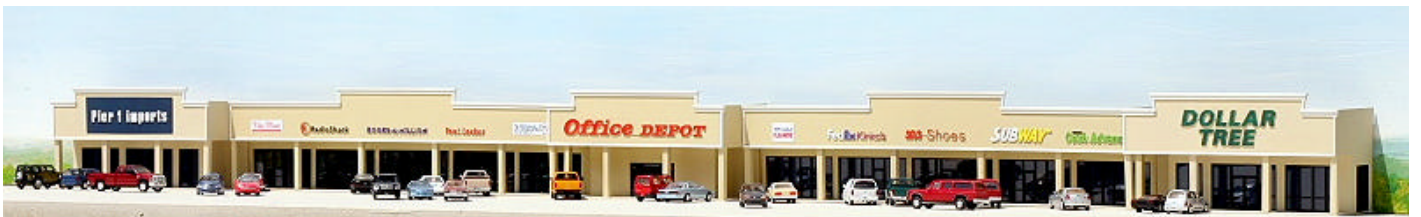
Mount the window glazing from behind. The window glazing is clear. If you want it tinted as on this demonstration model, you can apply some car window film to the backside. This you can buy in any auto parts store.



Mount the window frames on the glazing. It is best to glue it with some tiny drops of Crystal Clear or a similar liquid glass product.

Enjoy your Pier 1 Imports on your layout.

You can use this Pier 1 Imports as a stand-alone building, but it is meant to be the end-building in a mall complex in combination with the ML-001 Strip Mall backdrop building #1, the ML-002 Strip Mall backdrop building #2, the ML-003 Office Depot backdrop building and the ML-006 Dollar Tree backdrop building. The total size of the mall complex is 35 3/4" x 3 3/4" x 3 1/2" (907x70x95 mm)



Here are some other products you may enjoy in a future project:



#SMFS Summit Motel, full version



#DP-001 Domino's Pizza take-out



#CS-001 Dave's Coffee Shop



#TB-001 Taco Bell Restaurant



#CVS-001 CVS Pharmacy



#LO-001 Lowe's backdrop building



Mall complex



#ML-001 Strip Mall backdrop building #1



#ML-002 Strip Mall backdrop building #2



#ML-003 Office Depot backdrop building



#ML-004 Mall street sign



#ML-005 Pier 1 Imports backdrop building



#ML-006 Dollar Tree backdrop building



#JB-001 Jack-In-The-Box Restaurant



#SW-001 Subway Restaurant



#GS-001 Modern Gas Station backdrop

Keep updated for new products on our website: [www.summit-customcuts.com](http://www.summit-customcuts.com)